

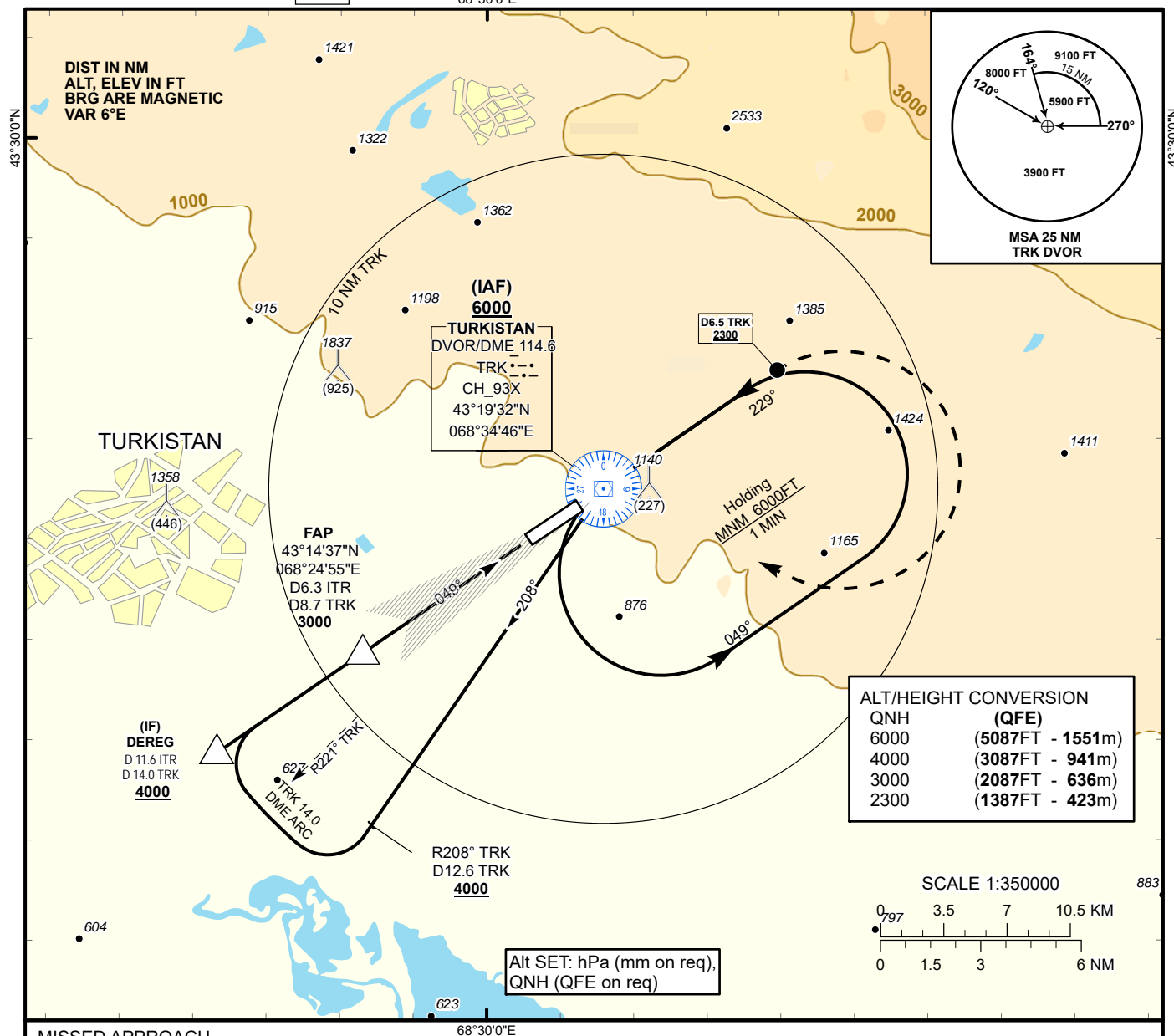
INSTRUMENT
APPROACH
CHART - ICAO

ILS
LLZ 110.7
ITR
GP 330.2
CH 44X

AERODROME ELEV **989 FT**
HEIGHTS RELATED TO
THR RWY 05 ELEV **913 FT**
68°30'0"E

TURKISTAN TOWER 131.3
TURKISTAN ATIS (EN) 124.4
TURKISTAN ATIS (RU) 118.3

TURKISTAN
ILS/DME Z
RWY 05



MISSED APPROACH

Climb on track 049°, at 2300 ft or above, outbound to D6.5 NM TRK. turn RIGHT to TRK. Climb initially to 4000 ft, then as directed. RADIO FAILURE: In the case of RCF climb to 6000 ft to TRK and join holding pattern. Missed approach turn speed limited to 240 Kt IAS maximum.

ILS RDH 49

IF
D11.6 ITR
D14.0 TRK
4000

TRANSITION ALT 10000 FT

FAP
D6.3 ITR
D8.7 TRK
3000

GP 3.0°
049°

IAF
6000

DVOR/DME
TRK

THR 05
ELEV 913FT

Aircraft Category		A	B	C	D	DIST to THR DME ITR	NM	6.3	5.0	4.0	3.0	2.0	1.0
Straight-in Approach OCA/H	CAT I	1113(200)	1118(205)	1 128(215)	1138(225)	DME TRK	NM	8.7	7.4	6.4	5.4	4.4	3.4
						ALTITUDE	FT	3000	2576	2249	1925	1602	1281
						HEIGHT	FT	2087	1663	1336	1012	689	368

DME ITR ZERO RANGED TO THR RWY 05

Aerodrome Operating Minima DH ft x RVR(CMV)						GS	Kt	80	100	120	140	160	180
						Desc.Rate(5.2%)	ft/min	420	530	640	740	840	950

TURKISTAN
ILS/DME Z RWY05

AERONAUTICAL DATA TABULATION

ILS approach to RWY05 from TRK DVOR/DME, DEREG	
Fix/point	Coordinates
TRK DVOR/DME	43° 19' 32.3"N 068° 34' 46.1"E
DEREG (IF) D11.6 ITR, D14.0 TRK	43° 11' 37.5"N 068° 18' 57.1"E
(FAP) D6.3 ITR, D8.7 TRK	43° 14' 36.6"N 068° 24' 54.5"E
THR RWY05	43° 18' 10.00"N 068° 32' 00.99"E
ITR LLZ	43° 19' 24.6"N 068° 34' 30.8"E